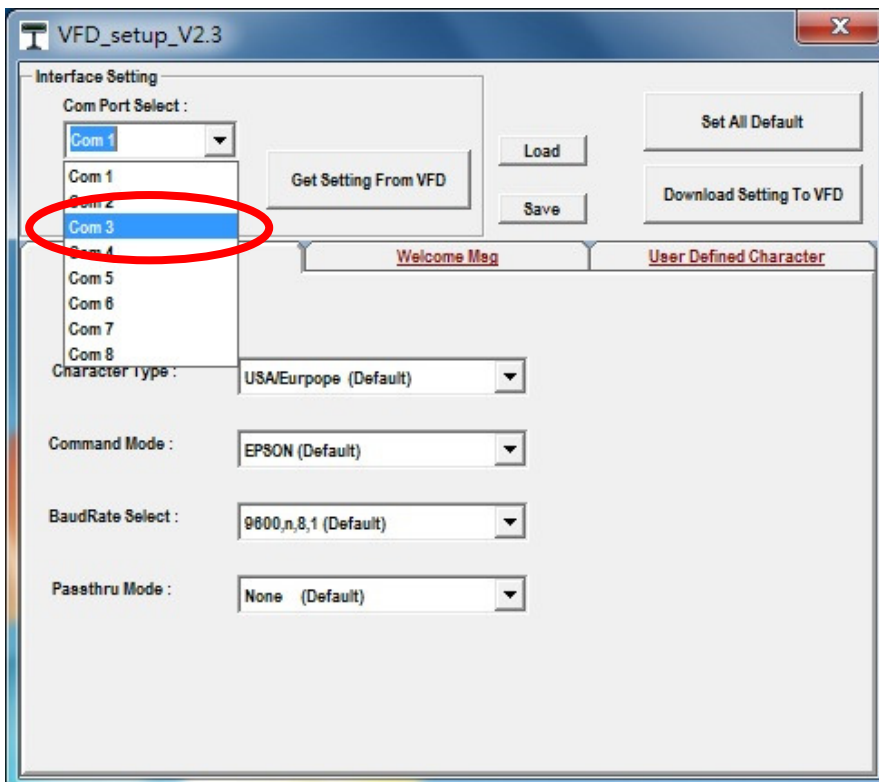
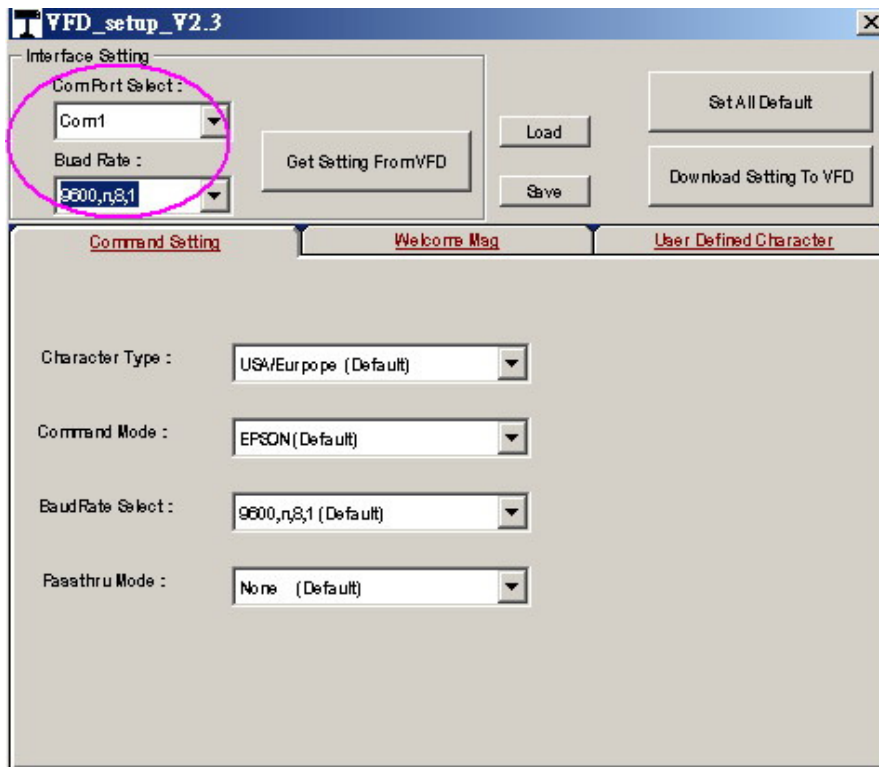


# Setup Software Utility Guide

1. Power on , and waiting test page of EEPROM test, Baud rate, and Command page.  
And you may set up the customer display by “VFD\_Setup.exe” Utility.
2. To execute “VFD\_Setup.exe” for setup communication between display and Utility



The Baud Rate will show on states page of the Utility (Note: You may check it when power on the display)

3. "Get Setting From VFD" button

To get all setting from the display and it'll refresh the "VFD\_Setup.exe" utility

4. "Character Type"/ "Command Mode"/ "BaudRate Select"/ "Passthru Mode"

Please refer to Chapter 4-5 user manual

The screenshot displays the VFD Setup utility with the following settings:

- Character Type :** USA/Europe (Default)
  - USA/Europe (Default)
  - FRANCE
  - GERMANY
  - U.K
  - DENMARK I
  - SWEDEN
  - ITALY
  - SPAIN
- Command Mode :** EPSON (Default)
  - LD220
  - EPSON (Default)
- BaudRate Select :** UTC/S
  - UTC/P
  - AEDEX
  - ADM788
  - DSP800
  - CD5220
- Passthru Mode :** None (Default)

Below the main settings, there is a detailed view of the BaudRate Select setting:

- BaudRate Select :** 9600,n,8,1 (Default)
  - 9600,n,8,1 (Default)
  - 19200,n,8,1
- Passthru Mode :** None (Default)

5. "Set All Default" button

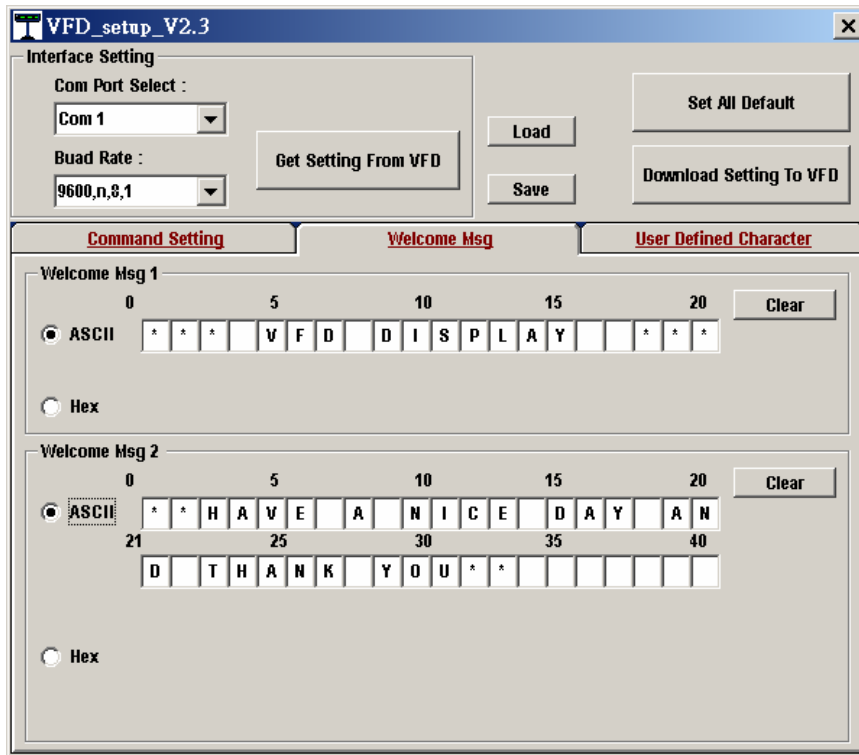
To show default setting, the Default table is,

Character Type	: USA
Command Type	: EPSON
BaudRate Setting	: 9600/n/8/1
Passthru Mode	: None
Welcome msg line1	: *** VFD DISPLAY ***
Welcome msg line2	: **HAVE A NICE DAY AND THANK YOU**

6. Welcome Msg

Welcome Msg line1 maximum 20 characters, line 2 maximum 20 characters, total of 40 characters.

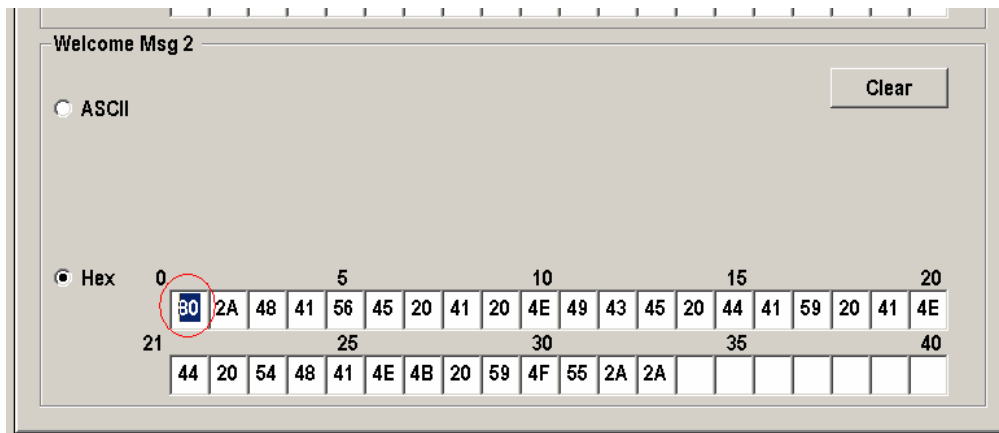
a. ASCII mode



You can type the character by keyboard (0x20h ~ 0x7Fh), if you press clear icon, it will clear the all Msg characters on AP.

#### b. Hex mode

Hex mode can define the character from 0x20h to 0xFFh, the range 0x80~0xFF which depends on the code page table.



Like the first character (0x80), in default code page will show € on display.

#### 7. "Download setting to VFD" button

This button is to download the setting from VFD\_Setup.exe to display.

\*After success dialog "Download O.K ! Please restart !" message popped up, you must restart display for enable new setting.



#### 8. "Save" button

To save user's setting in file, example: below picture to save file name as "Rename-GOODLUCK" file set for Welcome Msg.

P.S : The default setting named "VFD.vfd" which can't be made any setting change.

#### 9. "Load" button

For saving your time, you could load any setting file which you made before to the display. You must restart the display for enable the new settings.