

How To Set Language On MSR SOP.

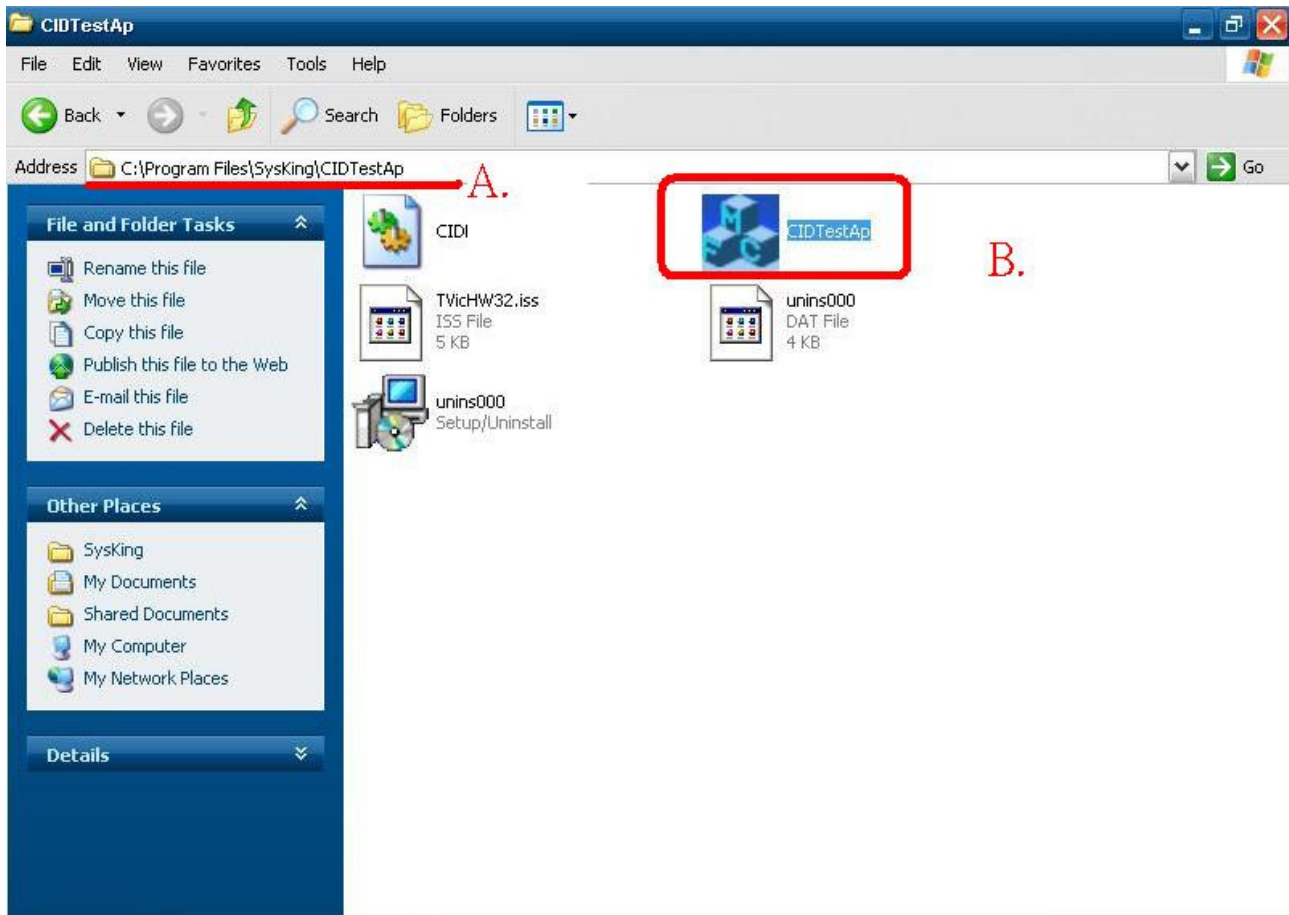
1. Please execute CIDTestAP AP.



2.

2-1 Please entry A “C:\program Files\SysKing\CID TestAP folder”

2-2 Please execute B “CID TestAP”

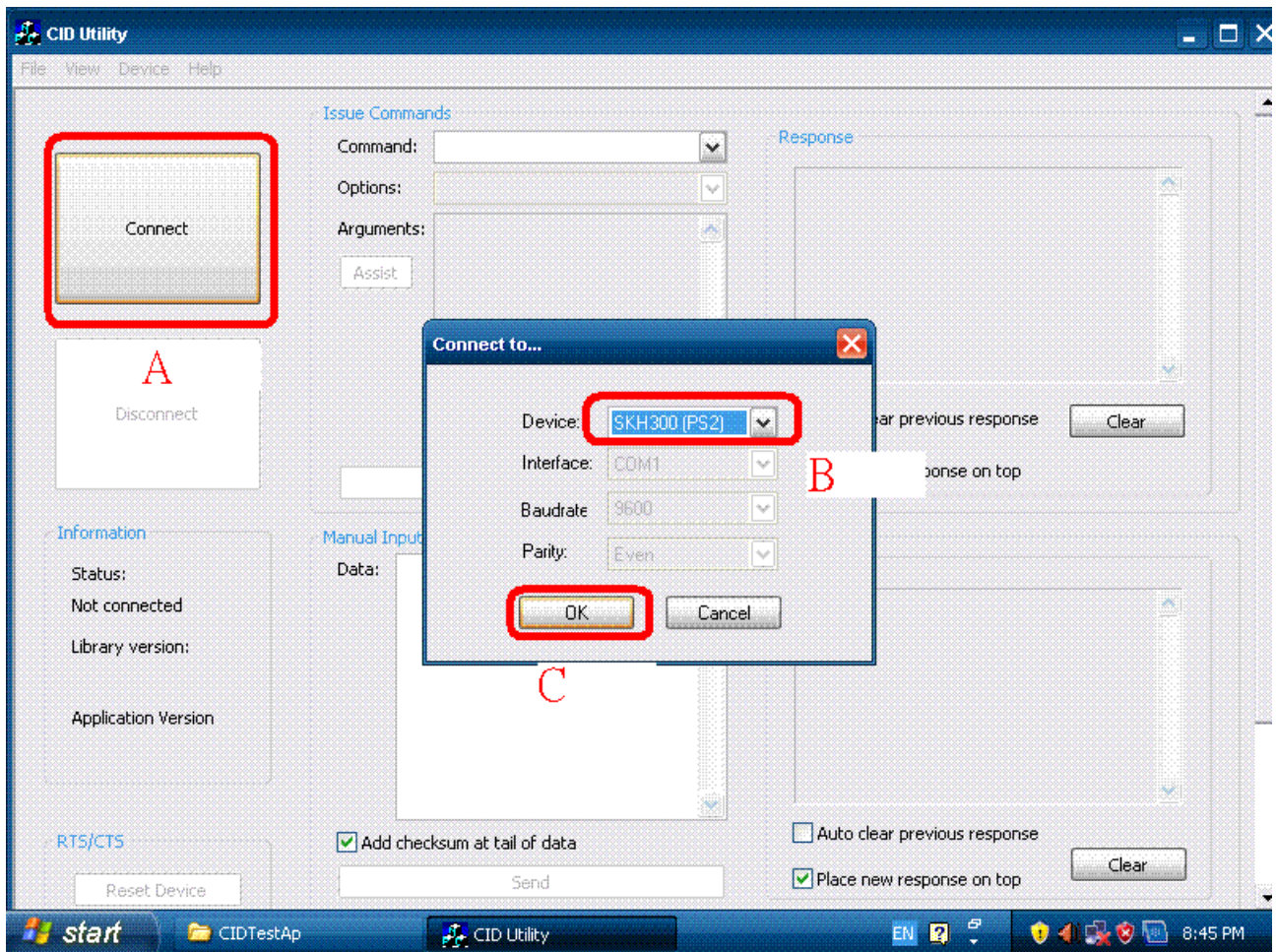


3.

3-1 Please click A “Connect”

3-2 Please select “SKH300(PS2)”

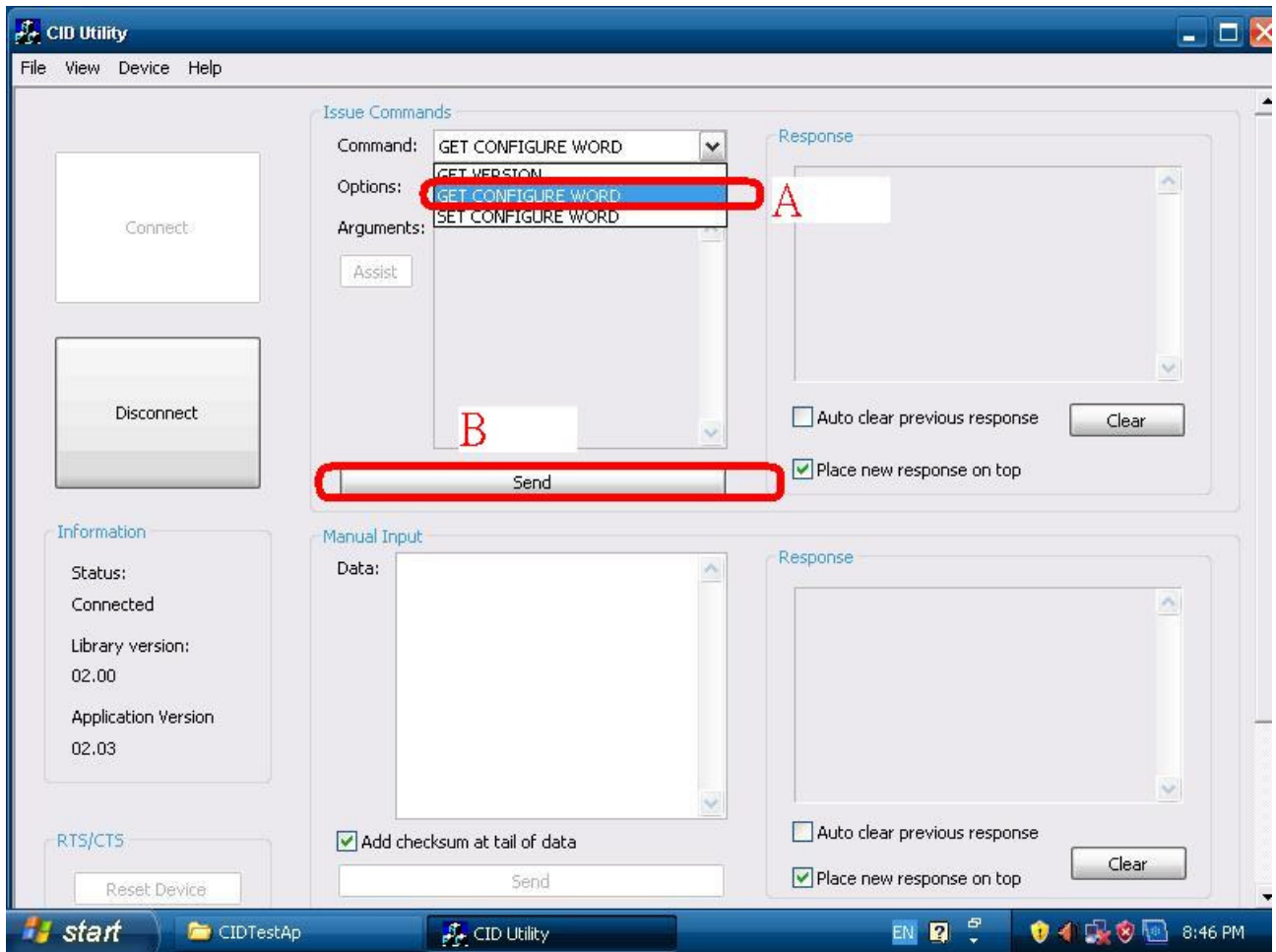
3-3 Please click “OK”



4.

4-1 Please select A “GET CONFIGURE WORD”

4-2 Please click B “Send”



5.

5-1 Please choice A language Option:

5-2 Please click B Set Configure Word

5-3 Please click C Close.

